

SIMILARS

1P2073 48.520 56.060
G.9/2 NTH

**APPROVED FOR
CONSTRUCTION**

THICKNESS	450 MM
NF FINISH	TROWEL
FF FINISH	GOOD TABLE
TYPE	COLUMN
VOLUME	1.42 M ³
GROSS AREA	3.35 M ²
NETT AREA	3.15 M ²
MASS	3.80 T
COG X	225 MM
COG Y	3771 MM
ERECT LEVEL	CURRENT
GRADE AT 28 DAYS	N50
GRADE AT DELIVERY	N20
GRADE AT FACTORY	N10
CONCRETE	NORMAL
MIX	50W-50G (C)
EXTERNAL COVER	35 MM
INTERNAL COVER	35 MM
EDGE CHAMFER	12 MM

DOWEL BARS NONE

QUALITY ASSURANCE

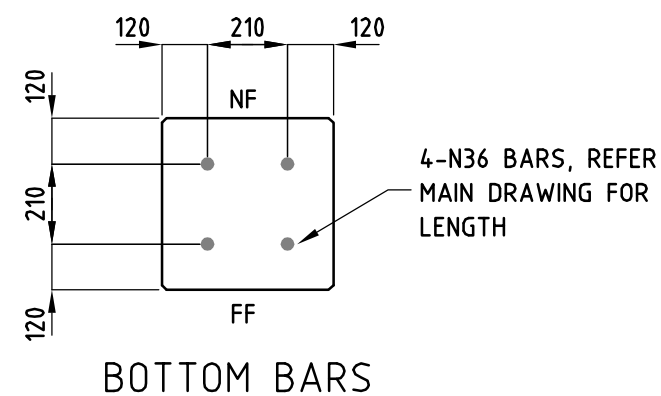
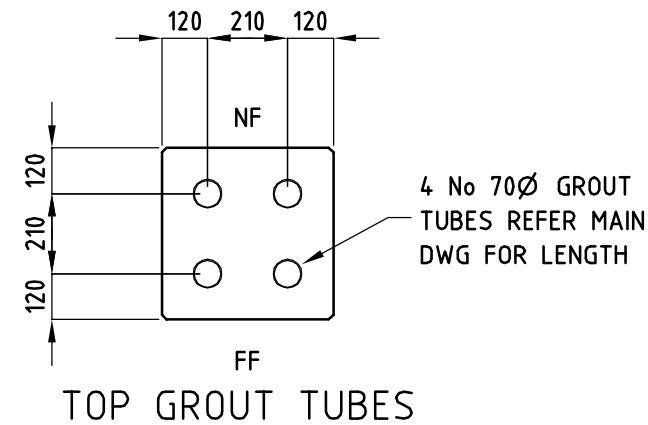
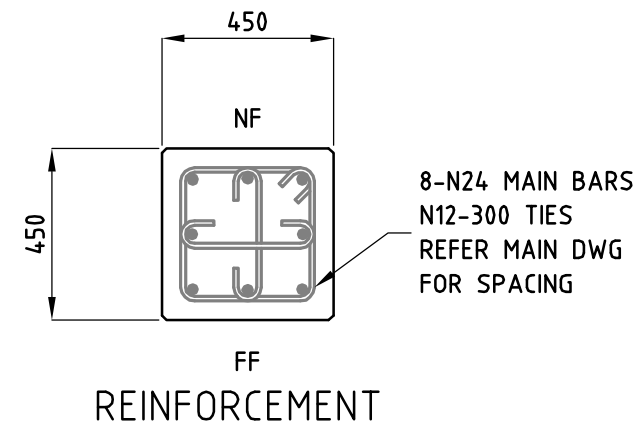
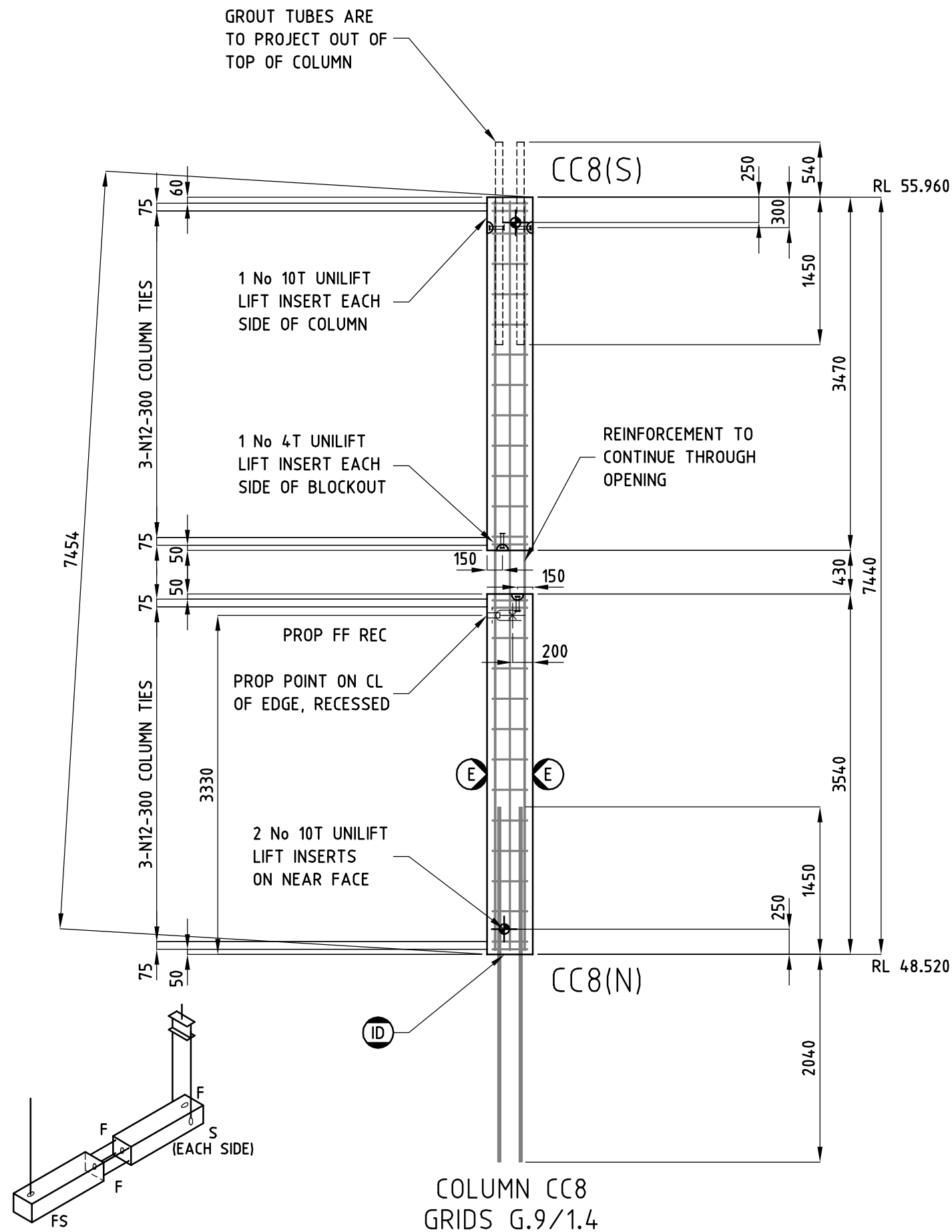
CONC	SETOUT	REO

ELEVATION G.9/1.4

VIEWED LOOKING NORTH

SCALE 1:50

EXT REF



NOTES:

- COG BARS 400 MM OVERLAP BARS 1000 MM UNO
- PROVIDE 4T LIFT INSERTS (N12 TENSION BAR)
- REV B - MIDDLE LIFTERS REVISED
- RIGGING TO BE APPROVED BY ERECTION ENGINEER

JOB

UNIVERSITY OF MELBOURNE, FACULTY OF ARCHITECTURE

DRAWN: 6 AUG 13 SV
REVISED: 13 AUG 13 GSB

ADVANCED PRECAST (AUST) P/L
TELEPHONE 9706 5111 FAX 9706 4551



JOB NO 3131
PANEL NO 1P2072
REV B

F - FACTORY
S - SITE
FS - FACTORY & SITE LIFTER
RIGGING DIAGRAM E5

COLUMN CC8
GRIDS G.9/1.4