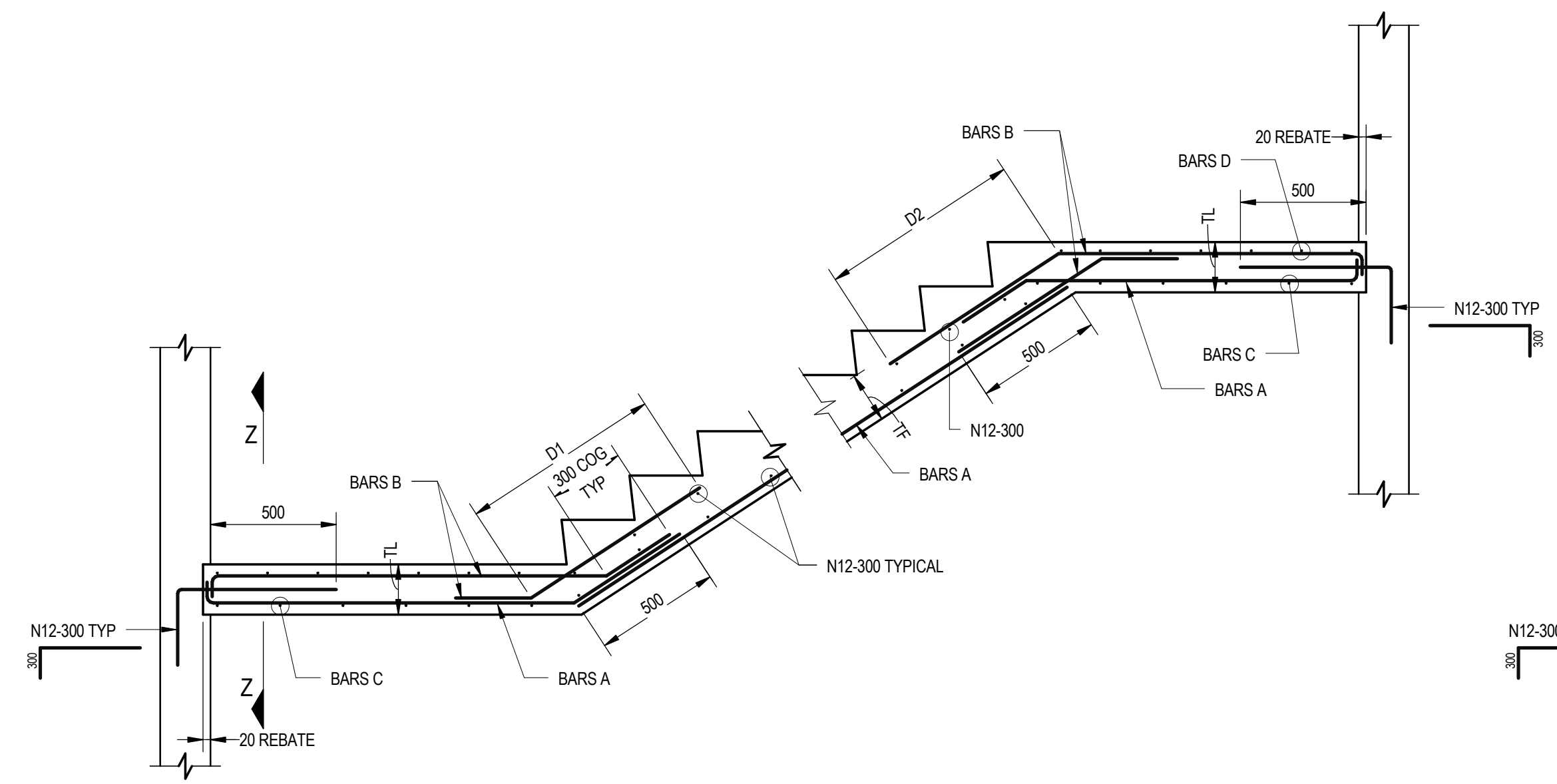
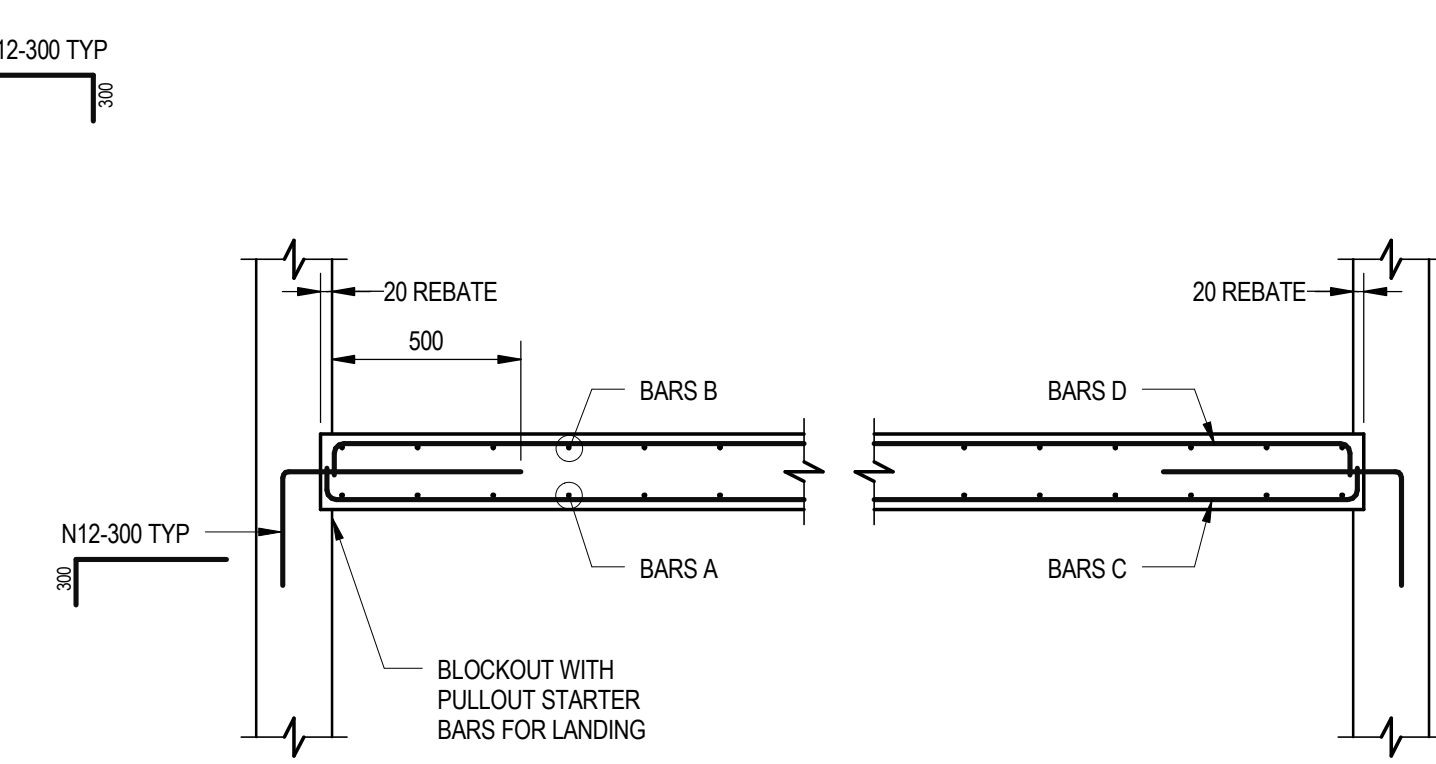


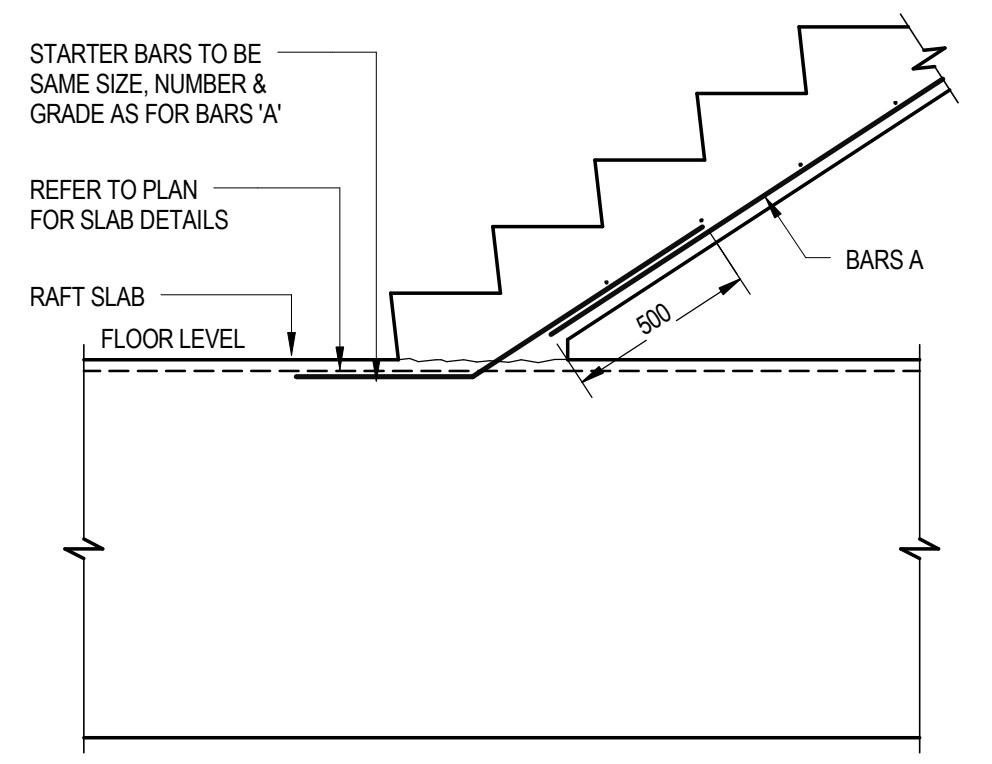
01 02 03 04 05 06 07 08 09 10 11 12 13



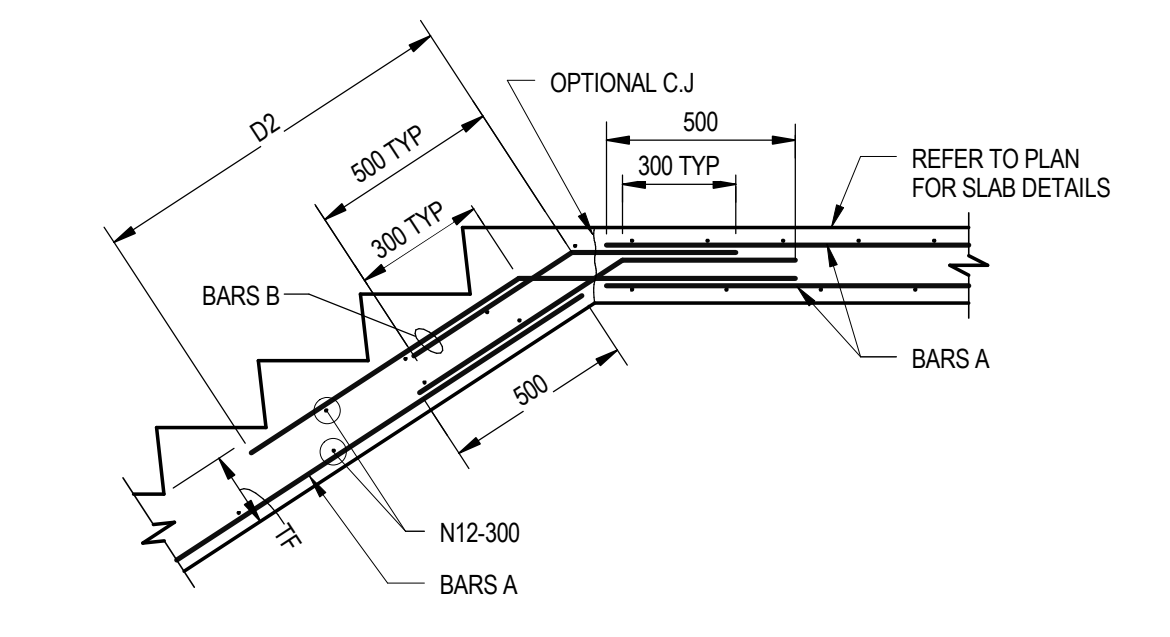
TYPICAL STAIR FLIGHT IN CORE (F#)



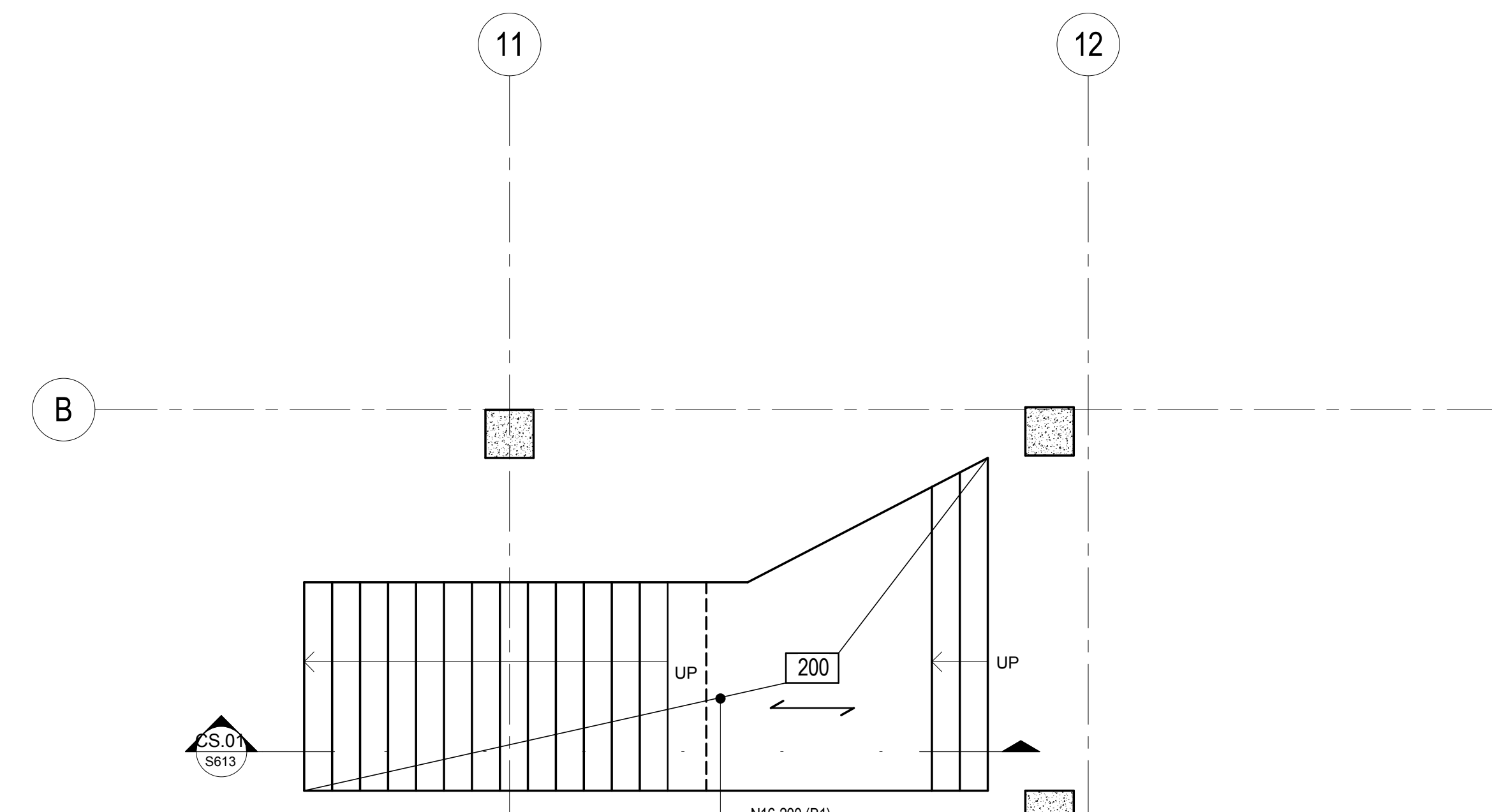
VIEW Z-Z LANDING TYPE



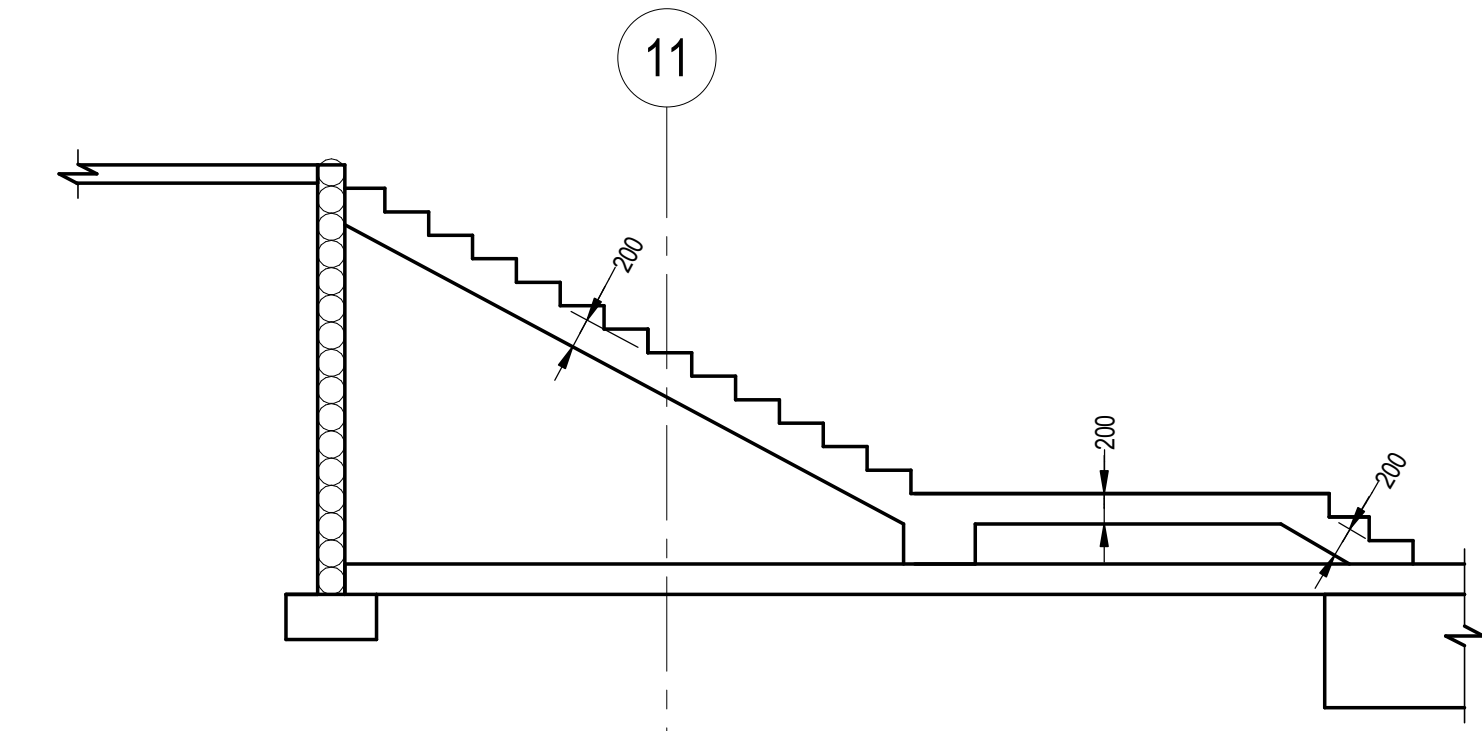
TYPICAL STAIR FLIGHT AT RAFT



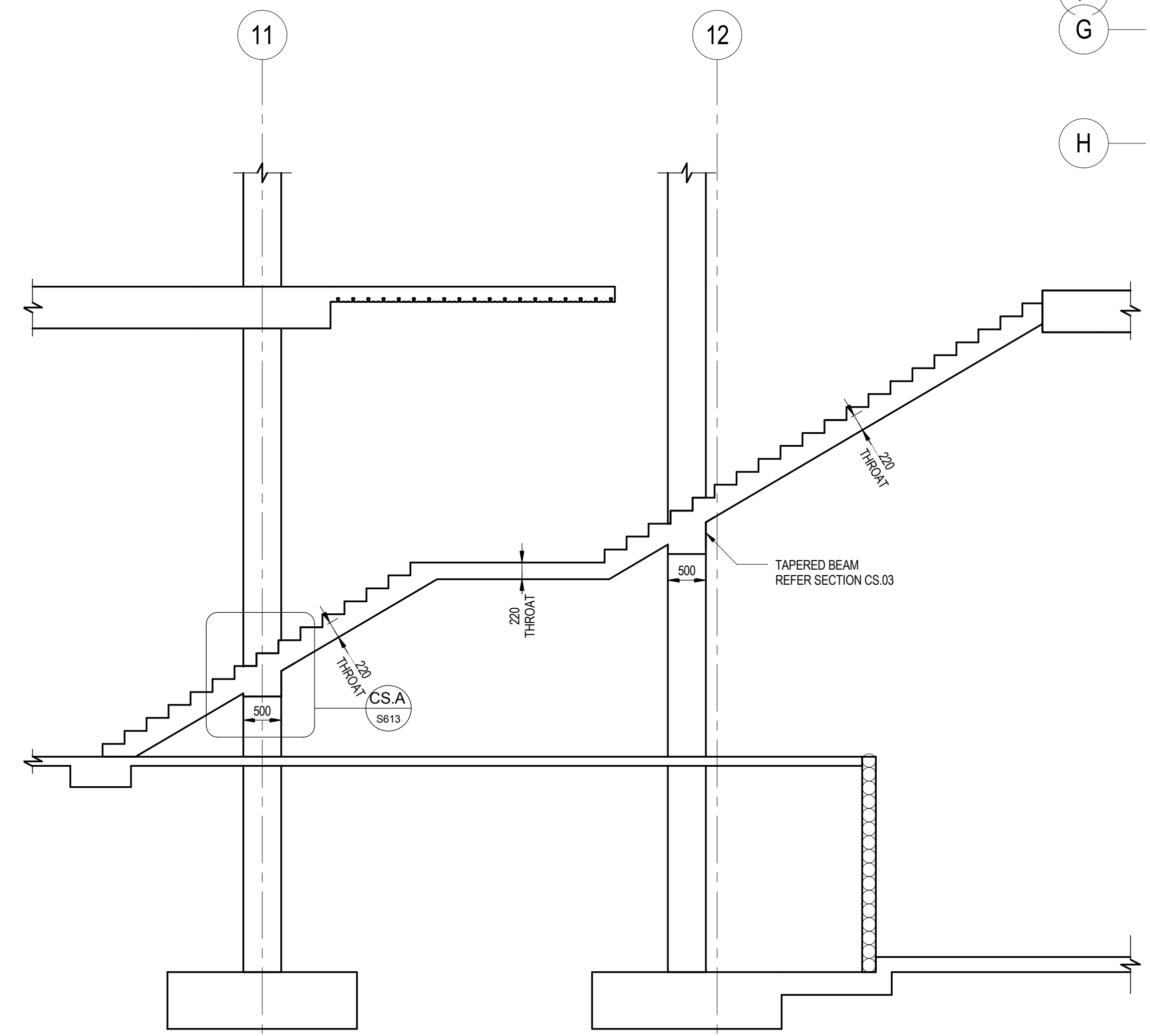
TYPICAL STAIR FLIGHT TO SLAB OR BEAM DETAIL



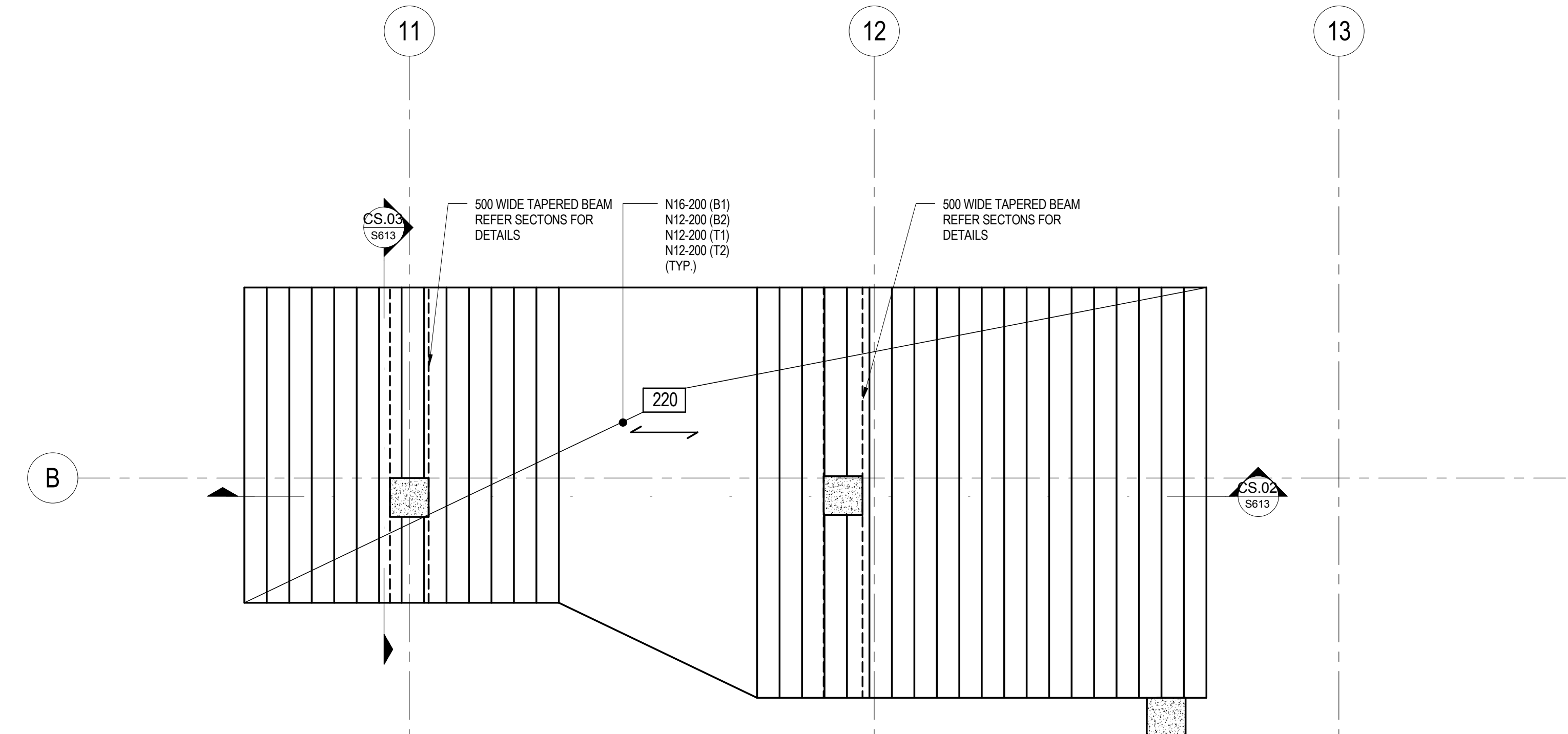
STAIR 00A - BASEMENT PLAN
SCALE: 1:50



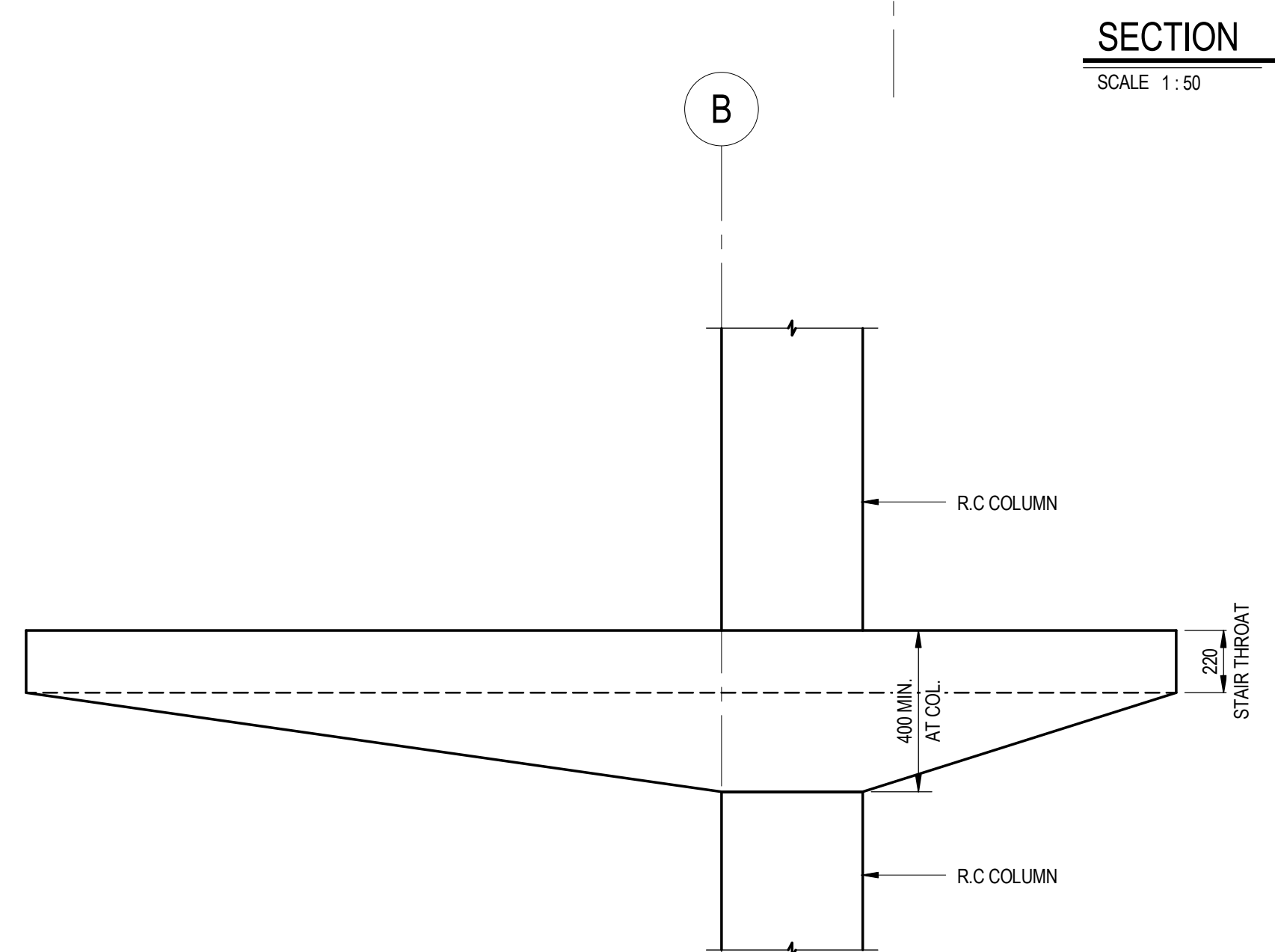
SECTION CS.01
SCALE: 1:50



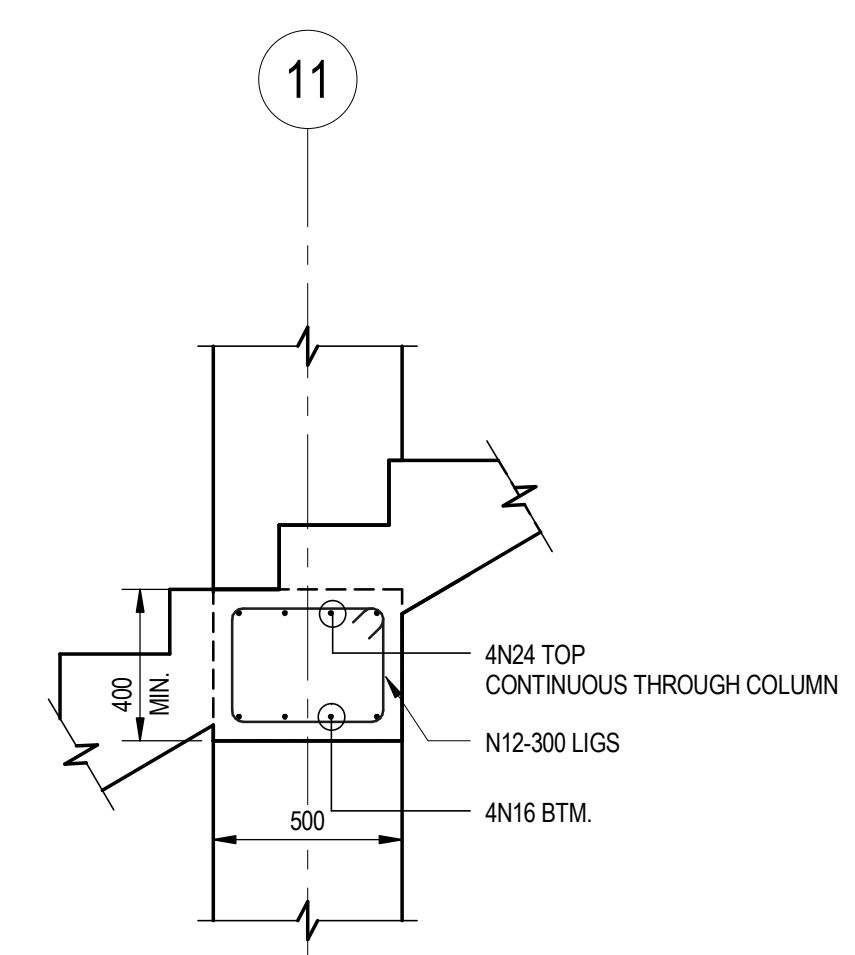
SECTION CS.02
SCALE: 1:50



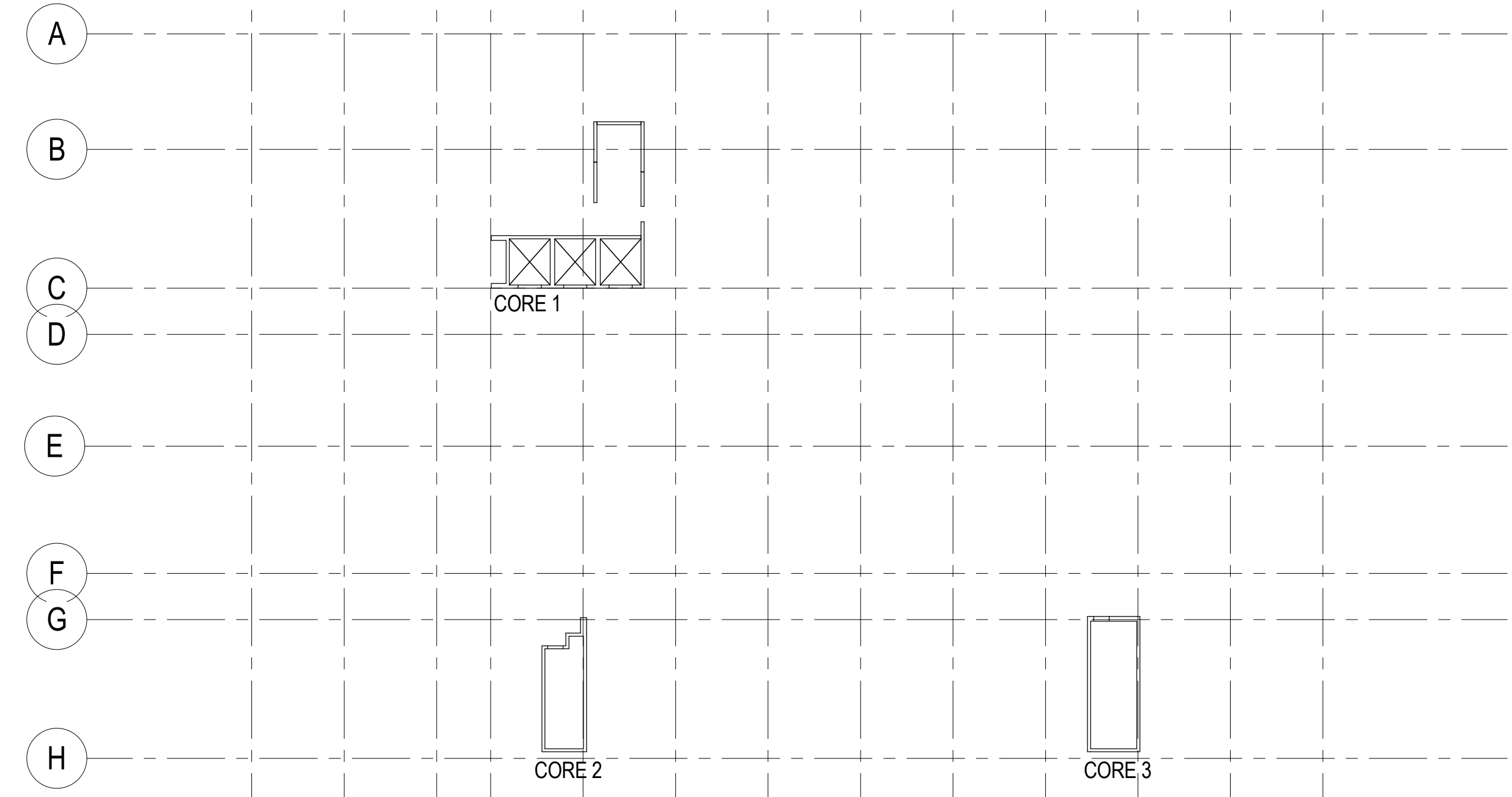
STAIR 00A - GROUND PLAN
SCALE: 1:50



SECTION CS.03
SCALE: 1:20



DETAIL CS.A
SCALE: 1:20

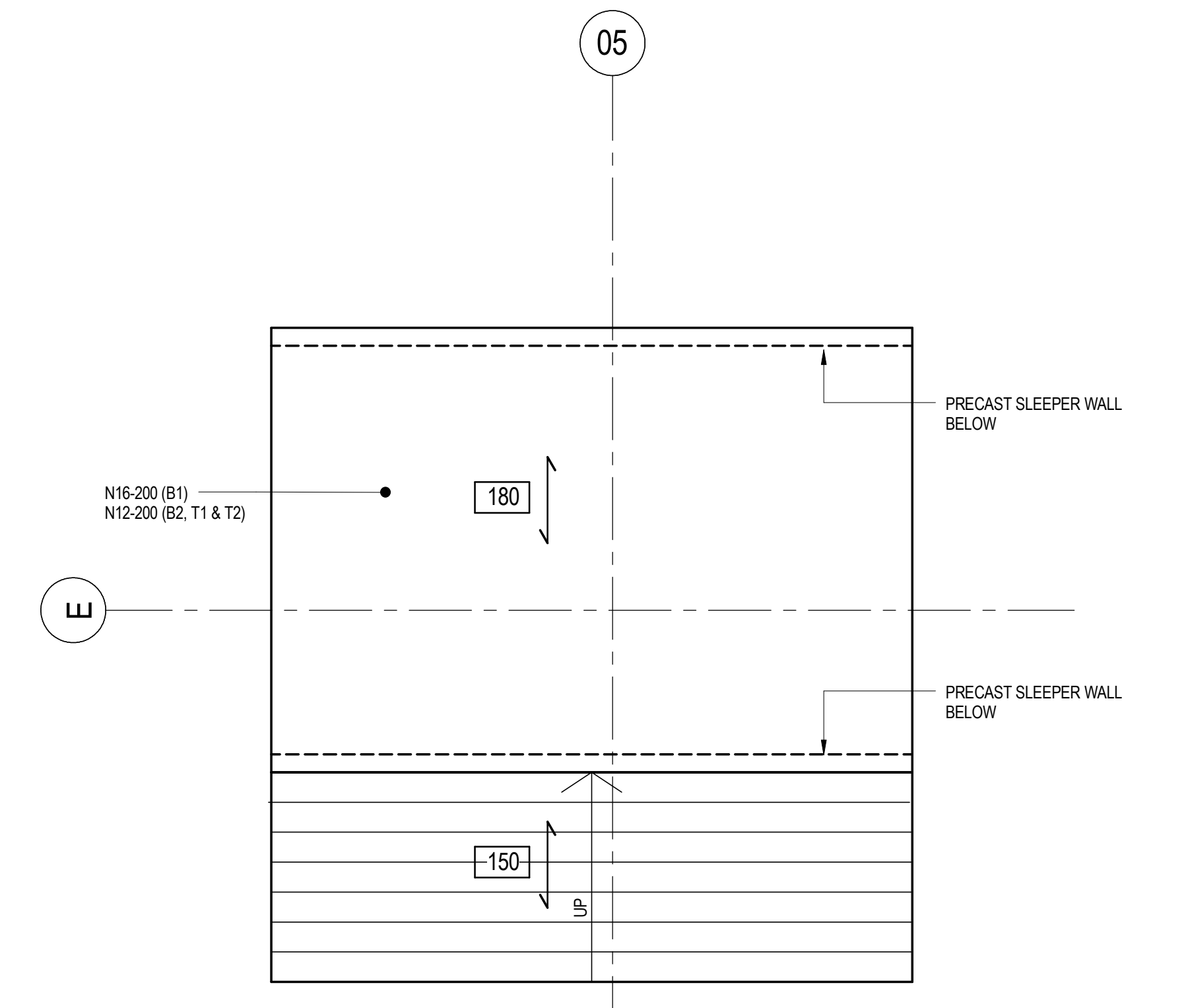


CORE KEY PLAN
SCALE: 1:300

CORE	FLIGHT TYPE	THICKNESS 'TF'	REINFORCEMENT		DIMENSION		REMARKS
			BARS A	BARS B	D1	D2	
1 & 2	F1	180	N16-200	N12-300	1000	1000	FOR STAIRMASTER FLIGHTS, MAY USE FABRIC ALTERNATIVE. REFER NOTE 2
3	F2	220	N16-200	N12-300	1000	1000	FOR STAIRMASTER FLIGHTS, MAY USE FABRIC ALTERNATIVE. REFER NOTE 2

CORE	LANDING TYPE	THICKNESS 'TL'	REINFORCEMENT		DIMENSION		REMARKS
			BARS C	BARS D	D1	D2	
1 & 2	L1	180 (U/N/C)	N12-150	N12-300	-	-	BARS C PLACED BELOW BARS A
3	L2	220 (U/N/C)	N12-150	N12-300	-	-	BARS C PLACED BELOW BARS A

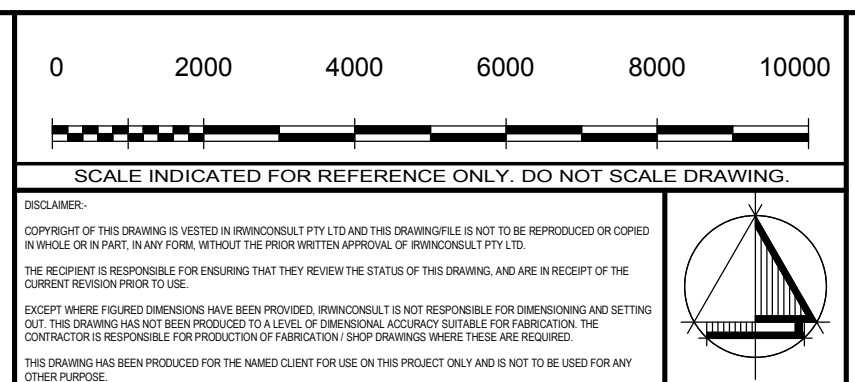
NOTE:
1. THESE SCHEDULES TO BE READ IN CONJUNCTION WITH THE TYPICAL STAIR FLIGHT DETAIL.
2. STAIRMASTER FORMWORK OR EQUIVALENT MAY BE USED IN CONJUNCTION WITH THE ABOVE REINFORCEMENT. NOTE THAT IF FABRIC REINFORCEMENT IS USED INSTEAD OF BARS, THE EQUIVALENT LAPS AS INDICATED ON THE TYPICAL FLIGHT DETAILS MUST STILL BE MAINTAINED AT CRANKS. IT MAY BE SIMPLER TO USE BARS/SPICES.



STAIR F PLAN
SCALE: 1:50

Rev	Description	By	Date	Rev	Description	By	Date	Rev	Description	By	Date
1	TENDER ISSUE	BP	31.08.12								
2	TENDER ISSUE	BP	07.09.12								
3	CONSTRUCTION ISSUE	BP	14.01.13								

CONSTRUCTION ISSUE



irwinconsult
Level 3, 289 Wellington Parade South
East Melbourne VIC 3002
1 +61 3 9622 9700 F +61 3 9650 6664
mb@irwinconsult.com.au ABN 89 050 214 894

Project
FACULTY OF ARCHITECTURE
BUILDING AND PLANNING
Client
UNIVERSITY OF MELBOURNE
PARKVILLE CAMPUS

Drawing Title CONCRETE STAIR DETAILS - SHEET 1			
Date 04/16/12	Drawn B.P.	Checked D.I.	Approved B.R.
Scales at AD As indicated	Job No. 09ME0504	Sheet No. S613	Rev. A